



41 COMPANIES AND ORGANIZATIONS • 2351 EMPLOYEES • \$396 MILLION OF INVESTMENT

*This new, larger building allows us to expand the complimentary services we provide. CES recently celebrated their 40th anniversary—this building should allow for the continued expansion of programs for years to come.*

David Chavez, Executive Director, Cooperative Educational Services

### COMPANY AND ORGANIZATION NEWS

#### CES Completes New Building

Cooperative Educational Services (CES) moved into their newly constructed 18,000-square-foot building on two acres of land west of the Sandia Synergy Center in the SS&TP. This facility is home for the organization and 32 of their 315 employees. CES is a purchasing cooperative serving all K-12 schools, all higher educational institutions, charter schools, and municipalities and counties in New Mexico.



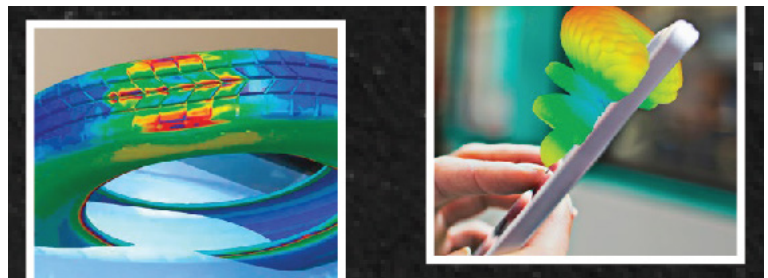
#### Tech Announces Success and Expansion

Technology Leadership High School (Tech) was approved by an unanimous vote from Albuquerque Public Schools to educate students for another five years and to open a middle school. In addition, through their Foundation, Tech is planning to obtain land and construct a new building in the SS&TP within the next few years. Tech opened in 2015 with 60 students and currently educates 290 students. Tech is a project-based school that develops future leaders in the technology and business fields. Students learn by engaging in collaborative work within a small, supportive school environment.



#### CATI Expands Capabilities

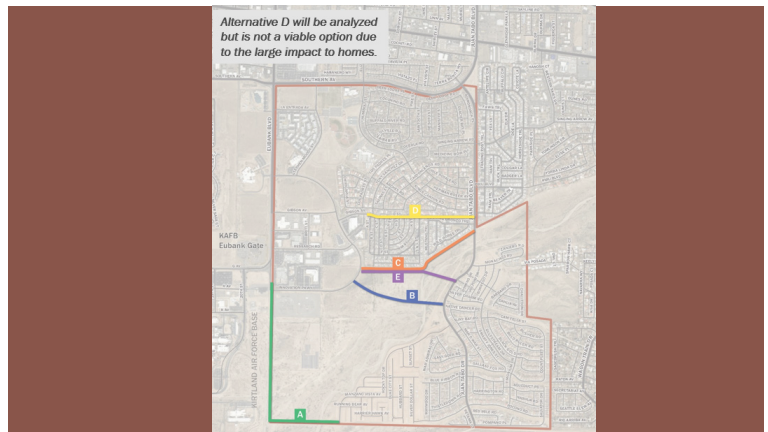
Computer Aided Technology (CATI) expanded its capabilities by merging their InFlow Technology subsidiary with CaelynX, an engineering consultancy based in Ann Arbor, MI. CATI specializes in sales, support, and training for engineering productivity tools. CaelynX specializes in engineering simulation software and services. The merger will give customers access to additional products and services.



### PARK NEWS

#### Street Connectivity Study

The Albuquerque City Council held two public meetings on the Juan Tabo Hills Connectivity Study project to communicate about different traffic flow alternatives between Juan Tabo Boulevard and Eubank Boulevard south of Southern Boulevard in order to reduce the amount of cut-through traffic in surrounding neighborhoods and the SS&TP. The first public meeting was to discuss the existing conditions and potential alternatives to be analyzed. The second public meeting was to present the analysis and ranking of the alternatives. For more information, visit the City website.



Linda von Boetticher, Technical Business Development Specialist and Program Leader | 505.844.9462 | [lvonboe@sandia.gov](mailto:lvonboe@sandia.gov)

[www.sstp.org](http://www.sstp.org) | 1611 Innovation Parkway SE, Albuquerque, New Mexico 87123

Sandia National Laboratories is a multimission laboratory managed and operated by National Technology & Engineering Solutions of Sandia, LLC, a wholly owned subsidiary of Honeywell International, Inc., for the U.S. Department of Energy's National Nuclear Security Administration under contract DE-NA0003525. SAND2021-1042 M